

SEPTEMBER 2026

# WELCOME TO YEAR 7

ST JOHN'S CE ACADEMY



[enquiries-secondary@sjc.cambrianlt.org](mailto:enquiries-secondary@sjc.cambrianlt.org)  
01235 933303

**St John's C of E Academy**

Secondary Site  
Douglas Drive  
Grove  
Wantage  
OX12 0GW

**St John's C of E Academy**

Primary Site  
Stanley Hall Rd  
Grove  
Wantage  
OX12 0GR

**Executive Headteacher:** Rick Holroyd

**Head of School - Secondary Phase:** Callum Jackson

**Head of School - Primary Phase:** Tracy Gardiner

**Chair of Governors:** Alan McPherson

**St John's**



CE ACADEMY

# THE --- CONTENTS

04

## **A Warm Welcome**

It is with great excitement and pride that we welcome you to St John's CE Academy.

06

## **Recruitment & Staffing**

Meet the growing team joining St John's.

08

## **Secondary Site**

An update on the Site and what to expect when it's complete.

11

## **Transition & Key Dates**

What to expect over the coming months to support a smooth transition.

15

## **Key Information**

Helpful information to support a smooth transition.

19

## **Vision For The Future**

Head of School welcome and vision for a thriving school community.

# A WARM WELCOME FROM SJO



**A** warm welcome to St John's CE Academy! We are delighted that you and your family will be joining us. We look forward to working closely with you to ensure a smooth and supportive transition into our growing school community.

“

At St John's Academy, we aspire for every individual to **grow** in wisdom and character, to **flourish** in our vibrant community, to **fly** beyond expectations, and to **live life in all its fullness**

(John 10:10)

”



# ST JOHN'S SECONDARY PHASE TEAM

We appointed an exceptional team of Secondary Phase staff in our first year and are delighted to say that, having been overwhelmed by the level of interest in joining St John's, we are already fully staffed for all teaching positions that will grow with our incoming Year 7 cohort in September 2026. This means a strong and fully established teaching team will be in place to welcome our next cohort. We also have a small number of support staff roles that will be advertised and recruited during the summer term.

**Mr Holroyd**  
Executive Headteacher



**Miss Carmichael**  
Maths Lead



**Mrs Chadwick**  
Humanities Lead



**Mr Chitty**  
Specialist Teacher



**Miss Heaphy**  
Administration Officer



**Mr Mcloughlin**  
Science Teacher



**Mr Jackson**  
Head of School



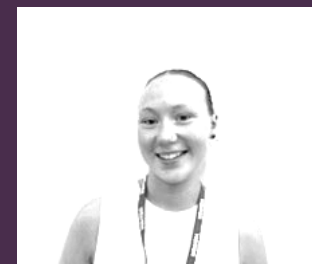
**Mrs Whitaker**  
English Lead



**Mr Greenwood**  
Creative Arts Lead



**Miss Ludlam**  
Teaching Assistant



**Miss Girgis**  
Languages Teachers



**Mr Nicholls**  
PE Teacher



**Mrs Dobson**  
Assistant Headteacher



**Mr Crocker**  
Science Lead



**Mrs Morris-Hornby**  
SENCO



**Mrs Spurway**  
Teaching Assistant



**Mrs Veal**  
Humanities Teacher



**Mrs Clark**  
Administration Officer



# SECONDARY SITE PROGRESS UPDATE



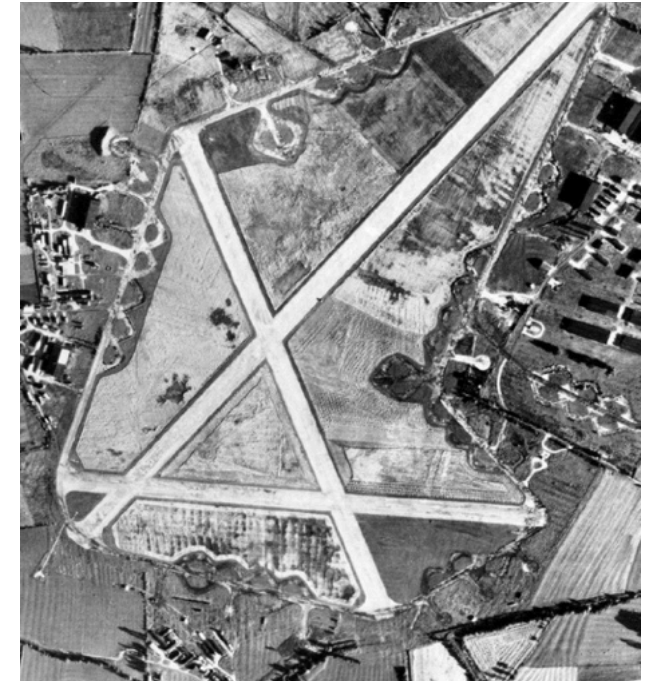
The construction of our £28.2 million secondary site has continued to make strong progress throughout the year. Whilst it has been disappointing not to move into the new building this year, establishing our foundations alongside Primary Phase colleagues and students has been a significant strength in our early development.

That said, it will be worth the wait. The new building provides an exceptionally high-quality learning environment for both students and staff, and our new Year 7 cohort will experience this from their very first day!

## A BRIEF HISTORY OF THE SITE

This area was once RAF Grove, a busy airfield during WWII used by both the RAF and US Air Force. As Grove has grown, the Wellington Gate development was created to support the expanding community.

Planned in partnership with the Cambrian Learning Trust, local families, the DfE, Bouygues UK, and other key stakeholders, our Secondary Site has been designed to provide an environment where students and staff will feel proud to learn and work.



## KEY FEATURES

The school has been thoughtfully designed to create a strong sense of community and belonging. Its welcoming U-shaped layout places a large central courtyard and shared social spaces at the heart of the site, creating a natural hub for connection and daily life. Bright, spacious walkways make the building easy to navigate, while modern systems and thoughtful design features help create a safe, inclusive, and welcoming environment for all.



### INDOOR FACILITIES

Inside, students will learn in bright, modern classrooms equipped with technology to support high-quality teaching. The building also includes a wide range of specialist facilities such as a four-court sports hall with changing rooms, science laboratories, design and technology rooms, a media suite, and dedicated spaces for art, music, and drama, including practice rooms and a performing arts studio. A two-storey library, theatre and assembly hall, flexible breakout areas, student reception, and spacious dining hall further enrich daily school life. Many of these spaces will also be enjoyed by primary pupils, helping to create one inspiring all-through environment.



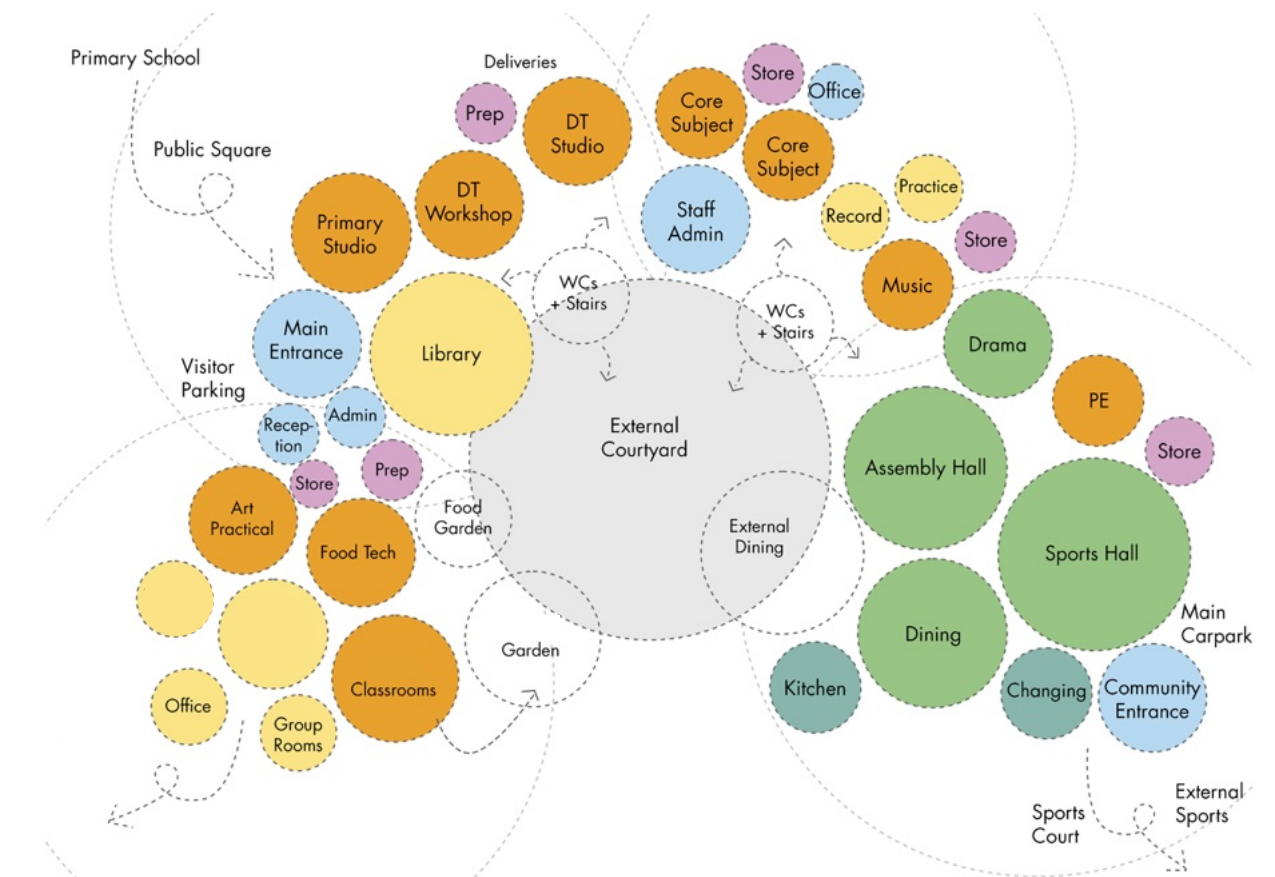
### SUSTAINABLE DESIGN

Our school is being built with the environment in mind, using eco-friendly timber and a green roof with solar panels and plants to help reduce emissions and save energy. The building is designed to stay warm in winter and cool in summer naturally, using clean energy and natural airflow to keep everyone comfortable. We encourage families to walk, cycle, or use public transport wherever possible. Our sustainable design reflects our values, supporting the way we learn, live, and care for the planet together.



### OUTDOOR FACILITIES

Beyond the classrooms, the grounds have been designed to promote activity, wellbeing, and outdoor learning. Students will enjoy an all-weather MUGA, full-size and mini pitches, and a 400m running track, alongside landscaped gardens, forest areas, and welcoming seating spaces for relaxation and social time. A dedicated growing area with fruit trees and raised beds will support hands-on learning and sustainability, while covered shelters provide secure storage for bikes and scooters. The site also includes dedicated parking for staff and visitors. A welcoming community courtyard with seating near the main reception creates a shared meeting space, and the site has been planned with opportunities for future developments that further enhance community use.



St John's



CE ACADEMY

CREATIVE SPACES.  
ACTIVE PLACES.  
**ALWAYS**  
CONNECTED.

A SCHOOL AT THE  
HEART OF ITS  
COMMUNITY

St John's has been designed to serve both its students and the wider community beyond the school day. From performances in the theatre to sport, music, dance, and creative arts clubs, our facilities support a wide range of after-school opportunities.

We believe these shared spaces will become a welcoming hub, bringing people together through sport, the arts, and shared experiences.

SEPTEMBER 2026



St John's



CE ACADEMY

STARTING  
STRONG.  
FEELING READY.  
BELONGING  
EARLY.

YEAR 7 TRANSITION  

---

AND NEXT STEPS

St John's



CE ACADEMY

# WHAT TO EXPECT FROM THE TRANSITION PROCESS

At St John's, we are committed to building a strong, supportive community where every student and family feels a sense of belonging. While we are actively planning for all aspects of St John's development, we want to assure you that ensuring a smooth, safe, and well-structured transition for your child remains our top priority.

We will continue to provide regular updates via email and at upcoming transition events, where we will cover key information and address any questions you may have.

If you have an enquiry that cannot wait until these events, please contact us at [enquiries-secondary@sjc.cambrianlt.org](mailto:enquiries-secondary@sjc.cambrianlt.org).

## KEY EVENTS

**Year 7 Welcome Evening & Community Social Event (29th June 2026):** A chance for Year 7 students to meet some of their teachers, learn about school life, and prepare for September (4:00pm – 5:00pm), followed by a Community Social Event (5:00pm – 6:00pm) where families can connect, meet the staff team, and enjoy some light refreshments.

**Year 7 Transition Day (9th July 2026, 8:30am – 3:00pm):** A full-day experience at St John's, where students will attend lessons, receive key information, and build connections with peers and the new staff team.

**Primary school visits:** During the course of the summer term, we will visit Year 6 students in their primary schools to make an early introduction, share information about St John's, highlight key details, and answer any questions students may have.



## ADDITIONAL ARRANGEMENTS

- **SEND transition support programme –** Tailored support for students with SEND, working closely with families throughout the summer term.
- **Strong links with local primary schools –** We will maintain regular communication with Year 6 teachers to gather key information in order to ensure a seamless transition.
- **Parent Workshops –** We host a series of termly parental workshops from September 2026 onwards covering the key aspects of school life at St John's:
- **Induction programme & pastoral support –** During the first weeks of term, students will follow a structured induction to help them settle in, build friendships, and gain confidence.
- **Baseline assessments –** Low-stakes assessments in Term 1 across key subjects to identify gaps, inform curriculum planning, and provide early intervention where needed.
- **Tutor / Parents Evening:** We host a parents evening in Term 2, offering families an early opportunity to meet their child's Tutor again, review transition progress, and discuss how we can continue to support each student's development together.

## SJO UNIFORM & EQUIPMENT SUMMARY

### Required Branded Items

- St John's blazer
- St John's clip-on tie
- St John's PE polo shirt
- St John's PE shorts or skort

Branded items can be purchased from our uniform supplier, **PMG Schoolwear**, either online at [www.pmg-schoolwear.co.uk](http://www.pmg-schoolwear.co.uk) or by appointment at their showroom: 8 Regal Way, Faringdon, Oxon, SN7 7BX (01895 809321). **All other uniform items may be purchased from supermarkets or high-street retailers.**

### Upper Body

**Blazer:** St John's blazer with badge

**Shirt:** Plain white, long or short-sleeved

**Tie:** St John's clip-on tie

**Optional Jumper:** St John's V-neck jumper



### Lower Body

**Trousers:** Plain black, tailored school trousers

**Skirt:** Black pleated skirt

**Shorts:** Tailored black school shorts

**Tights:** Plain black

**Socks:** Plain black; *small logos are acceptable.*



### Footwear

**Shoes:** Plain black, polishable, leather or leather look school shoe



### Outerwear and Bags

**Coat:** Plain, waterproof coat

**Bag:** Rucksack-style, able to hold A4 books/folders



### PE Kit

**Top:** St John's PE polo shirt

**Bottoms:** St John's PE shorts or skort

**Socks:** St John's or plain black sports socks

**Shoes:** Supportive sports trainers



### Optional PE Layers

St John's quarter-zip top

Plain black fleece or black tracksuit top



### Equipment

Students should have a pencil case containing at least 2 pencils, 2 pens, a 30cm ruler, 2 whiteboard pens, and a scientific calculator, as well as a reading book. A school shop is available where these items can be purchased. All other equipment will be provided by the school.



### Appearance

**Hair:** Must be natural in colour and style

**Makeup:** Any makeup worn must be very minimal and subtle e.g light foundation

**Outdoor Wear:** Coats, scarves, gloves, and hats.

### Uniform Support

If you have any questions or need support with uniform, please don't hesitate to contact us at: [enquiries-secondary@sjcambrianlt.org](mailto:enquiries-secondary@sjcambrianlt.org). All conversations will be handled with sensitivity and confidentiality.

### Further information

Further information about our uniform, including expectations and what is not acceptable, can be found on our website. If you are ever unsure whether an item meets our uniform expectations, please check with the school before purchasing it.

**We ask for the support of parents and carers in ensuring students are correctly equipped and in full uniform each day, so learning time is not disrupted. Please label all items clearly and check equipment daily until these routines become established habits.**



## THE SCHOOL DAY

### SCHOOL DAY

8:15am	School Gates Open
8:25am	School Gates Close
8.30am	Tutor Time
8.50am	Lesson 1
9.50am	Lesson 2
10.50am	Break
11.10am	Lesson 3
12.10pm	Lesson 4
1.10pm	Lunch
1.50pm	Lesson 5
2.50pm	Tutor Time
3.00pm	End of day

Whilst many students may arrive earlier, staff are contracted to be on Site and therefore on duty from 8:15am, and this is when the student gates will open.

Unless there is wet weather, students should arrive into the courtyard, where they will meet their tutor at 8:25am, ready for an 8:30am start. In wet weather, students will instead have access to the Theatre and Dining Hall.

Students must be on site by 8:25am to ensure they are on time for tutor. Any student arriving after this point will be marked as late.

Students attending breakfast clubs, interventions, or other pre-arranged morning provision should arrive via main reception.

Students will have access to a wide range of extra-curricular opportunities after the school day. More information will be shared in September.

For information about after-school reflections, please refer to the school's Behaviour Policy.



## Know me. Support me. Care for me.

At St John's, the Tutor role is central to how we care for our pupils. Its purpose is to ensure that every child is known, supported, and cared for as a whole person. Tutors **know** their pupils well so that every child feels seen, understood, and has a strong sense of belonging. Tutors **support** pupils by maintaining high expectations, removing barriers to learning, strengthening positive habits, and guiding them through both success and challenge. Tutors **care** by building warm, trusted relationships with pupils and their families, ensuring that no child feels unseen, unheard, or left behind.

Tutors see students at the start and end of every day, providing consistency, care, and structure. They ensure students begin the day ready to learn and end the day settled, reflective, and supported.

In addition to the tutor programme, tutors play a key role in ensuring a consistent and purposeful start to each day. Each day, tutors help students to be READY:

- R – Relationships:** welcoming students and building warm, positive relationships
- E – Equipment:** checking uniform, equipment, and readiness to learn
- A – Attendance:** reinforcing high expectations around punctuality and attendance
- D – Devices:** ensuring mobile phones are handed in at the start of the day and collected before leaving
- Y – Yourself:** Supporting students to take personal responsibility for their organisation, engagement, and behaviour, so they are calm, focused, and in control of their learning.

Tutors are the first point of contact for pastoral support, providing early intervention for day to day concerns such as organisation, friendships, and wellbeing. They take time to listen, guide, and respond, communicating proactively with families and working closely with wider school teams where additional support is needed.

Throughout the week, tutor time follows a structured programme that includes:

- **Everybody Listening** – Introduction to the weekly theme and key messages
- **Everybody Talking** – Structured discussion to develop oracy and explore different perspectives
- **Everybody Reading** – Reading to develop literacy, vocabulary, and understanding
- **Everybody Thinking** – Reflection on current affairs and ethical decision-making
- **Everybody Celebrating** – Sharing highlights from the week and celebrating student success

This helps students develop key habits such as listening, reading, speaking, thinking, and reflecting, while also building a strong sense of community and belonging.





# SECONDARY PHASE TIMETABLE (25/26 EXAMPLE)

	BS	Tutor	1	2	BR1	3	4	LU	5	Tutor	AS
<b>Mon</b>	8:15 - 8:30	Year 7In/Tu1	Year 7In/En1	Year 7In/Rs1	Year 7In/Sc1	Year 7In/Ma1	Year 7In/En1	Year 7In/En1	Year 7In/Tu1		
		HLW	HLW	SCC	SZC	ECC	HLW	HLW			
		-	-	-	-	-	-	-			
	8:15 - 8:30	S.03	S.03	S.06	S.05	S.01	S.03	S.03	S.03		
		Tutor	English	Religious Studies	Science	Maths	English	Tutor			
<b>Tue</b>	8:15 - 8:30	Year 7In/Tu1	Year 7In/Ma1	Year 7In/Sc1	Year 7In/Hi1	Year 7In/Co1	Year 7In/En1	Year 7In/Tu1			
		HLW	ECC	SZC	SCC	ECC	HLW	HLW			
		-	-	-	-	-	-	-			
	8:15 - 8:30	S.03	S.01	S.05	S.06	S.01	S.03	S.03	S.03		
		Tutor	Maths	Science	History	Computing	English	Tutor			
<b>Wed</b>	8:15 - 8:30	Year 7In/Tu1	Year 7In/Ma1	Year 7In/Mfl1	Year 7In/Ge1	Year 7In/Ar1	Year 7In/En1	Year 7In/Tu1			
		HLW	ECC	AZD	SCC	NRG	HLW	HLW			
		-	-	-	-	-	-	-			
	8:15 - 8:30	S.03	S.01	S.02	S.06	S.04	S.03	S.03	S.03		
		Tutor	Maths	MFL	Geography	Art	Academic Enrichment	Tutor			
<b>Thu</b>	8:15 - 8:30	Year 7In/Tu1	Year 7In/Rs1	Year 7In/Sc1	Year 7In/Ma1	Year 7In/Ar1	Year 7In/En1	Year 7In/Tu1			
		HLW	SCC	SZC	ECC	NRG	HLW	HLW			
		-	-	-	-	-	-	-			
	8:15 - 8:30	S.03	S.06	S.05	S.01	S.04	S.03	S.03	S.03		
		Tutor	Religious Studies	Science	Maths	Art	English	Tutor			
<b>Fri</b>	8:15 - 8:30	Year 7In/Tu1	Year 7In/Fi/Pe1	Year 7In/Fi/Pe1	Year 7In/En1	Year 7In/Sc1	Year 7In/Pd1	Year 7In/Tu1			
		HLW	JZL & RZP	JZL & RZP	HLW	SZC	NRG	HLW			
		-	-	-	-	-	-	-			
	8:15 - 8:30	S.03	S.Pe	S.Pe	S.03	S.05	S.04	S.03	S.03		
		Tutor	Physical Education	Physical Education	English	Science	Personal Development	Tutor			

## Arrival to School

Students arrive between 8:15am and 8:25am via the East Entrance, where the bike sheds are located. During this time, students gather in the courtyard before meeting their tutor at 8:25am for tutor time. In wet weather, supervised indoor spaces such as the theatre and dining hall will be opened as directed. All bikes and scooters should be stored safely in the designated storage areas during the school day. Any student travelling to or from school by bike must wear a helmet.

## Academic Enrichment

P5 Enrichment is a weekly enrichment hour built into the timetable where students can explore new interests, develop confidence, work with others, and take part in clubs, leadership, projects, and wider opportunities. Across the year, students will also experience careers talks, visiting speakers, and formal presentations that broaden horizons and connect learning to the wider world. All enrichment opportunities contribute to our S.H.A.P.E Award, which recognises growth in Service, House, Academic, Physical, and Enterprise.

## End of Day Tutor Time

The day finishes with a more informal tutor session. This may include, but is not limited to: tutor group games, activities, group discussion, personal reflection, equipment checks or 1:1 support as required. This is an important opportunity to end the day positively, ensure students are ready to leave, and give them a chance to raise any concerns before going home.

## After School & Reflections

Following tutor time, students may move on to after-school opportunities such as homework club, sports clubs, or other enrichment activities. Students who have received a Reflection during the day will be asked to stay to discuss this with their tutor (R2 = up to 15mins) or a senior leader (R3 = up to 60mins) and reset for the next day. Where concerns are repeated, families will be contacted so that school and home can work together supportively.

## Reading the Timetable

Student timetables will include: Year Group, House (Fi = Fidelis, In = Integritas, Ve = Veritas, Co = Concordia), Teacher Initials, Room, Subject.

## Two-Week Timetable Cycle

Our timetable is based around five lessons each day and runs on a two-week cycle (Week 1 and Week 2). At the end of each term, the timetable resets, so if a term finishes on Week 2, the next term will always begin on Week 1, regardless of how many days were in the previous week. This structure and the timings of the school day have been well received by our current students.

## Breaktime

At break time, students can access a range of social spaces. These typically include the: Dining hall, Library, Outdoor areas & designated toilet areas. In particularly severe weather, further indoor arrangements will be made.

## Lunchtime

Lunchtime offers additional opportunities for students to relax, socialise, and get involved in wider school life. Examples of what may be available include: games and activities, reading spaces, computing areas, homework support, recreational or competitive sports, social spaces, and other extra-curricular opportunities as timetabled.



“  
**LIVE LIFE IN ALL  
 ITS FULLNESS**  
 ”

JOHN 10:10

## HEAD OF SCHOOL

Welcome to St John's CE Academy. St John's is a place where children are known, valued and inspired from their earliest years through to age sixteen, and the school will continue to grow into a community where every child can thrive. Rooted in our Christian values of Courage, Kindness and Respect, we combine high expectations with genuine care, academic ambition, strong character, a strong sense of team and a deep sense of belonging, foundations that will shape all we become.

As an inclusive Church of England school, we warmly welcome families of all faiths and none. Our values shape our culture, guide our decisions and define how we treat one another. As one all-through school for ages 2–16, we are focused on the whole child's journey and will continue to build consistency, strong foundations and smooth progression at every stage.

Our curriculum is ambitious, rich and carefully sequenced to help pupils know more, remember more and achieve more. In calm, purposeful classrooms, pupils develop the knowledge, skills and independence needed for the future. We believe every child can succeed, and barriers should never become limits, so inclusion is planned from the outset through excellent teaching, clear routines and timely support, and will remain central to our future growth.

Care and connection sit at the heart of our community. We create safe, predictable environments where pupils feel valued, supported and ready to learn. Through kindness, shared experiences, celebration and service, we are building a culture where every child feels they belong and will be inspired to contribute positively to others. Clear, warm and purposeful communication strengthens, and will continue to strengthen, the partnerships between pupils, families, staff and the wider community.

Who our pupils become is just as important as what they achieve. Alongside academic success, we intentionally develop character through enrichment, responsibility, leadership and courageous advocacy. We want every young person to leave St John's ready to serve others, stand up for what is right and make a positive difference in the world.

Our state-of-the-art facilities enhance this vision by providing inspiring spaces where pupils and staff can learn, work, perform, compete and create with pride. Beyond the school day, these spaces also serve our wider community, helping St John's become a welcoming hub for connection, opportunity and shared experiences.

Our vision is simple: we aspire for every individual to grow in wisdom and character, to flourish in our vibrant community, to fly beyond expectations, and to live life in all its fullness (John 10:10)

**Callum Jackson**  
 Head of School - Secondary Phase  
 St John's CE Academy

